

## Mill Duty Service Option

The Mill Duty Service option is available on all reels with external spring drive motors. This includes 2000 through 2800 Series reels.

■ This option is recommended for reels used in critical processes, where downtime must be held to an absolute minimum, or where high labor costs make it necessary to minimize installation time.

■ To order the service option add the suffix **-MD** to the model number of any 2000 through 2800 Series Reel.

■ The features of the Mill Duty Service option are designed to make installation and service of Aero-Motive Cable Reels faster and easier than any other brand available.

- Service option available on all Series 2000 - 2800 models
- Use option when downtime is critical
- Two junction boxes provide quick access for all working and lead-in cable connections
- Quick change spring motor is standard on all Series 2000 - 2800
- To order, add suffix “-MD” to model number on any Series 2000 - 2800
- A full line of Mill Duty Reels is available. Just ask your representative for the Mill Duty Catalog.

## Easy Cable Connections

All Mill Duty Reels feature two junction boxes which provide quick, easy access for all working and lead-in cable connections.

The working cable connection is made at a junction box attached to the slip ring chamber. Cable passes through a watertight connector at the junction box.



*Self-contained slip ring assembly can be removed in one piece for service and a replacement installed in a matter of minutes.*

High temperature lead wires are installed at the factory, connecting the slip ring to the junction box. Working cable can be installed without disturbing the slip ring or removing the slip ring cover.

Power supply “lead-in” is made at a junction box (up to 2” NPT hole size for conduit). Internal wiring is provided by high temperature leads from the slip ring through the stationary mainshaft to the junction box.



## Fast Tensioning End Plate

The fast-tensioning end plate is designed so that set-up and tensioning of a reel can be

completed in a matter of seconds, reducing critical downtime. Tension is set after the cable has been installed and final electrical connections are made. No special tools are required to set tension. This is done using a bar or wrench rotating an external nut clockwise, as one 360° turn of the nut puts one setup turn on the spring. A second external nut is used for decreasing the tension.

## Quick Change Spring Motor

A quick-change spring motor is provided on all 2000 through 2800 Series Cable Reels. A drive pin engages the motor shaft with the drive shaft allowing the spring motor change to be completed in moments, reducing critical downtime. Resetting the tension is done without unhooking the cable, with the fast-tension end plate on the spring motor. All spring motors are lubricated for life and are inter-



changeable between reels within the 2000 through 2800 group. ONE size spring is used in ALL spring motors to reduce the number of replacement parts maintained for critical applications.

## Reels for Hazardous Locations

All series 1100M-2800 reels are available with enclosures which are designed to comply with requirements for the following locations as defined by the National Electric Code:

- Class I, Division I, Group C and D
- Dust-ignition proof for Class II, Division I, Group E, F and G
- Suitable for Class III, Division I, Outdoor Hazardous locations

Fully enclosed junction boxes have connecting leads which are sealed at both ends with a sealing compound. Slip rings are oversized, and constructed of extra heavy material.

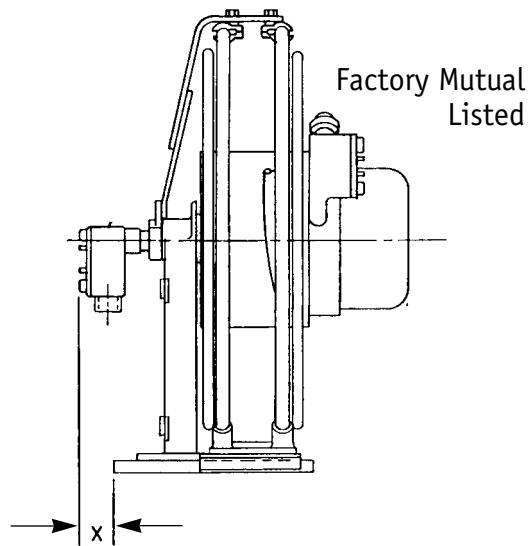
These Pow-R-Matic Reels (Models 1100M through 2800) are available with 3 to 10 conductors (35 Amp slip rings). Nos. 18 to 10 AWG; or 3 or 4 conductors (75 Amp. slip rings), Nos. 8 to 4 AWG.

TO ORDER: add suffix "-X" to catalog number to designate the above construction.

Note: Ground wire is connected through slip ring and to frame of reel on ALL models.



- Available on all Series 1100 - 2800 models
- Class I, Division I, Group C&D
- Dust-ignition proof for Class II, Division I, Group E and G
- Suitable for Class III, Division I, Outdoor Hazardous locations
- Fully enclosed junction boxes with connecting leads
- Oversized, rugged construction slip rings
- To order, add suffix "-X" to model number on any Series 1100 - 2800



Junction box included on Hazardous Location models. Line entrance tapped as required by the National Electric Code.

On Series 1100M-1500M, the junction box will increase the width of the reel as follows:

Reel Series	X Dimension	
	in.	mm
1100M	6.25	158.8
1200M	4.13	104.9
1300M	4.13	104.9
1400M	4.13	104.9
1500M	4.13	104.9

The junction box does not affect width on Series 2000-2800.

\*NOTE: The slip ring cover on hazardous location reels will extend .50 inch (12.7mm) farther than on standard models.

If dimensions are critical, consult factory for certified prints.

## Welding Reels

Aero-Motive's Electric Welding Reels are built to high quality standards. Standard models cover the four most desirable wire sizes.

- Containerized mainspring for safe and easy handling
- Weathertight design
- Safety declutching drive hub
- Rugged four-roller guide on 4000 & 5000 series
- Adjustable guide arm on 4000 & 5000 series
- Permanent lubrication
- Ratchet lock

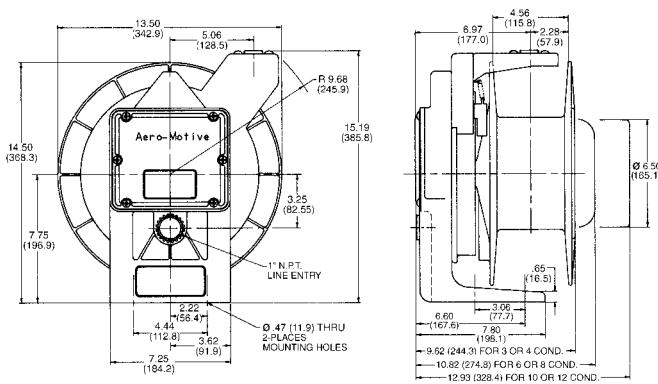


### 4000 SERIES WELDING REELS

Dimensions similar to Series 0900 (Page 41)

Catalog No.	AWG Wire Size.	Cable Length (ft)	Amp Rating
ERA4000	Less Cable	—	375*
ERA4450	4	50	145
ERA4250	2	50	250
ERA4150	1	50	250
ERA4040	1/0	40	350
ERA4940	2/0	40	375

Cable included on all models except ERA4000.

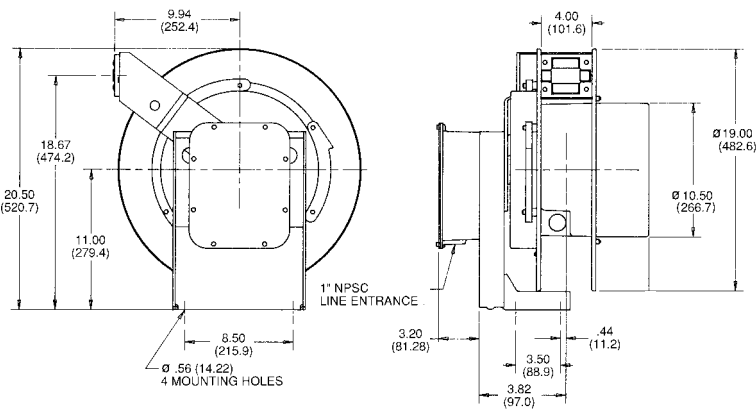


### 5000 SERIES WELDING REELS

Dimensions similar to Series 1000M (Page 41)

Catalog No.	AWG Wire Size.	Cable Length (ft)	Amp Rating
ERL51000	Less Cable	—	375*
ERL51280	2	80	150
ERL51180	1	80	200
ERL51075	1/0	75	250
ERL51960	2/0	60	300

Cable included on all models except ERL51000.



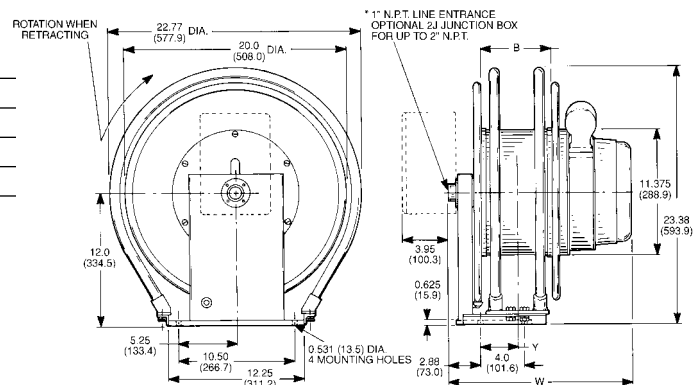
### 6000 SERIES WELDING REELS

Dimensions similar to Series 1100M (Page 42)

Catalog No.	AWG Wire Size.	Cable Length (ft)	Amp Rating
ERM60000	Less Cable	—	450*
ERM61100	1	100	150
ERM60110	1/0	110	200
ERM69090	2/0	90	250

Cable included on all models except ERM60000.

When cable is installed, lengths shown in selection charts are maximum allowed when used with corresponding wire size.



\*Rating is established for slip ring only. The proper wire size must be used to obtain this rating.

## Pendent Station Retractors

Spring powered retractors provide a simple, inexpensive means of lifting pendent stations, connectors, lights, and more out of the way when not in use. A simple tug on the cable returns the pendent to its original position.

To select a retractor, add the total weight of the pendent, the cable between the pendent and the cable clamp, and half the cable hanging in the loop. Select a retractor that has sufficient weight capacity and travel distance to fit your requirements.

### R F L 4-8 LB. RETRACTOR

- Easy tension adjustment without tools
- Full range of motion with 360° swivel hanger
- Nylon-covered steel cable
- Ratchet lock

Model	Weight		Cable Travel	
	lbs.	kg	ft.	m
RFL6	4-6	1.8-2.7	6.6	2
RFL8	6-8	1.8-2.7	6.6	2



### B F L 6-24 LB. BALANCERS

- Heavy duty, containerized spring
- Full range of motion with 360° swivel hanger
- High-impact composite housing
- Ratchet lock
- Shackle design for secure mounting

Model	Weight		Cable Travel	
	lbs.	kg	ft.	m
BFL9	6-9	4.1-5.9	6.6	2
BFL13	9-13	4.1-5.9	6.6	2
BFL18	13-18	5.9-8.2	6.6	2
BFL24	18-24	8.2-10.9	6.6	2



### 1 5 1 5 1-30 LB. TORQUE REELS

- Easy external tension adjustment
- Series T offers automatic drum lock

Model	Weight		Active Travel		Tension Build Up	
	lb.	kg	ft.	m	lb.	kg
0515T	5	2.3	15	4.58		
1015T	10	4.5	15	4.58		
1515T	15	6.8	15	4.58	19	8.64
T2N20-20	20	9.1	20	6.10	38	17.25
T2N30-20	30	13.6	20	6.1	28	12.7



### Hose and Cable Support

Model	Cable/Hose Dia.
61020	0.49"-0.91"
61021	0.91"-1.25"



## Secondary Support Cable

A secondary support cable or chain should be attached to equipment mounted overhead to ensure against injury in the event of a failure of the hanger or supporting structure.



### Balancer Secondary Support Chains

Model	Description	Max. Length
H13760001	Support for RFL	20"
H13760000	Support for BF	20"

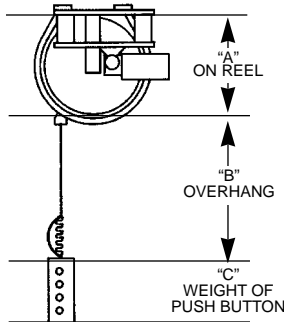
## Series 4100 Gear Motor Driven Reel

The Series 4100 is a heavy duty reel used on cranes to raise and lower push button pendant stations.

### Selecting Motor Driven Reels

Step 1. Select your cable size and active cable travel from chart A on page 39.

Step 2. Determine the weight of the push button station, fixtures and overhanging cable (B plus C). It is not necessary to add the weight of the active cable – it has been figured into each model. Only additional weight – that of the overhanging cable and push button station – need be considered.



Listings show reel capacities only and are not meant to imply that heavy loads should be hung on small cables. Always consider the mechanical limitations of the cable before specifying reels.

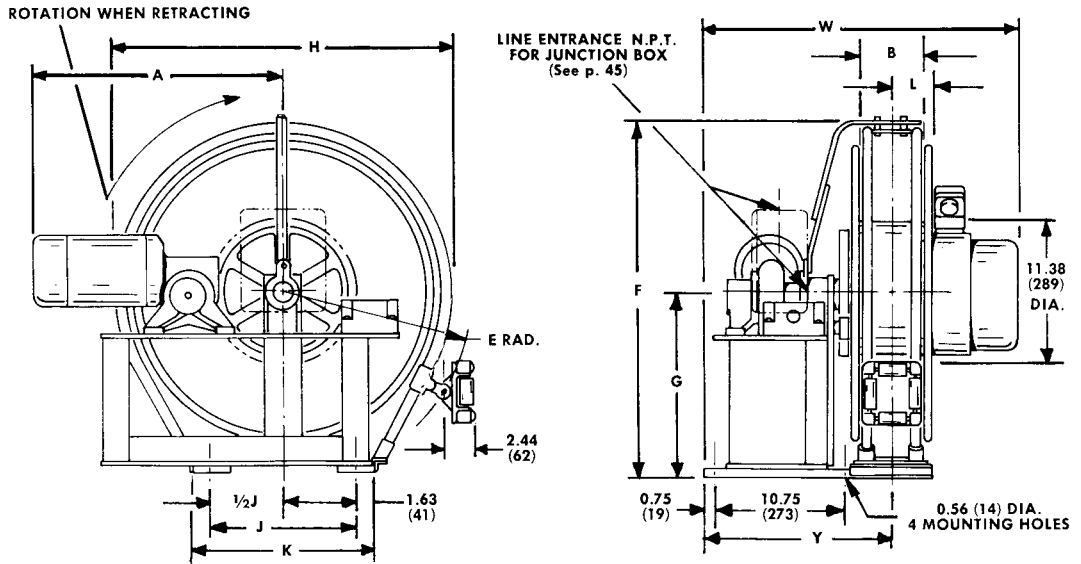
Step 3. Total weight of Step 2 must not exceed the weight shown in the column to the right of each Reel Model Number.

Active Cable	20ft. 6.1m	30ft. 9.15m	40ft. 12.2m	50ft. 15.25m	60ft. 18.3m							
No. 16 Cable	No. of Cond.	Model No.	Weight lbs. mm	Model No.	Weight lbs. mm	Model No.	Weight lbs. mm	Model No.	Weight lbs. mm	Model No.	Weight lbs. mm	
	3	4101-011-303	43 19.5	4101-011-303	43 19.5	4101-011-303	43 19.5	4101-011-303	43 19.5	4101-011-303	43 19.5	
	4	4101-011-304	43 19.5	4101-011-304	43 19.5	4101-011-304	43 19.5	4101-011-304	43 19.5	4101-011-304	43 19.5	
	6	4101-011-306	43 19.5	4101-011-306	43 19.5	4101-011-306	43 19.5	4101-011-306	43 19.5	4101-011-306	43 19.5	
	8	4101-011-308	43 19.5	4101-011-308	43 19.5	4101-011-308	43 19.5	4101-011-308	43 19.5	4101-011-308	43 19.5	
	10	4101-011-310	43 19.5	4101-011-310	43 19.5	4101-011-310	43 19.5	4101-011-310	43 19.5	4101-011-310	43 19.5	
	12	4101-011-312	43 19.5	4101-011-312	43 19.5	4101-011-312	43 19.5	4101-011-312	43 19.5	4101-011-312	43 19.5	
	14	4101-011-314	43 19.5	4101-011-314	43 19.5	4101-011-314	43 19.5	4101-011-314	43 19.5	4101-011-314	43 19.5	
	16	4101-011-316	43 19.5	4101-011-316	43 19.5	4101-011-316	43 19.5	4101-011-316	43 19.5	4101-011-316	43 19.5	
	20	4101-011-320	43 19.5	4101-011-320	43 19.5	4101-011-320	43 19.5	4102-012-320	40 18.2	4102-012-320	40 18.2	
	24	4101-011-324	43 19.5	4101-011-324	43 19.5	4102-012-324	40 18.2	4102-012-324	40 18.2	4102-012-324	40 18.2	
	30	4101-011-330	43 19.5	4101-011-330	43 19.5	4102-012-330	40 18.2	4102-012-330	40 18.2	4102-012-330	35 15.9	
	36	4101-011-336	43 19.5	4102-012-336	40 18.2	4102-012-336	40 18.2	4102-012-336	35 15.9	4102-012-336	27 12.3	
	No. 14 Cable	3	4101-011-303	43 19.5	4101-011-303	43 19.5	4101-011-303	43 19.5	4101-011-303	43 19.5	4101-011-303	43 19.5
		4	4101-011-304	43 19.5	4101-011-304	43 19.5	4101-011-304	43 19.5	4101-011-304	43 19.5	4101-011-304	43 19.5
		6	4101-011-306	43 19.5	4101-011-306	43 19.5	4101-011-306	43 19.5	4101-011-306	43 19.5	4101-011-306	43 19.5
8		4101-011-308	43 19.5	4101-011-308	43 19.5	4101-011-308	43 19.5	4101-011-308	43 19.5	4101-011-308	43 19.5	
10		4101-011-310	43 19.5	4101-011-310	43 19.5	4101-011-310	43 19.5	4102-012-310	40 18.2	4102-012-310	40 18.2	
12		4101-011-312	43 19.5	4101-011-312	43 19.5	4101-011-312	43 19.5	4102-012-312	40 18.2	4102-012-312	40 18.2	
14		4101-011-314	43 19.5	4101-011-314	43 19.5	4102-012-314	40 18.2	4102-012-314	40 18.2	4102-012-314	37 16.8	
16		4101-011-316	43 19.5	4101-011-316	43 19.5	4102-012-316	40 18.2	4102-012-316	40 18.2	4102-012-316	37 16.8	
20		4101-011-320	43 19.5	4102-012-320	40 18.2	4102-012-320	40 18.2	4102-012-320	36 16.3	4102-012-320	28 12.7	
24		4101-011-324	43 19.5	4102-012-324	40 18.2	4102-012-324	40 18.2	4103-013-324	37 16.8	4103-013-324	37 16.8	
30		4101-011-330	43 19.5	4102-012-330	40 18.2	4103-013-330	37 16.8	4103-013-330	36 16.3	4103-013-330	24 10.9	
36		4101-011-336	43 19.5	4102-012-336	36 16.3	4103-013-336	37 16.8	4103-013-336	25 11.4	4103-013-336	11 5.0	
No. 12 Cable		3	4101-011-303	43 19.5	4101-011-303	43 19.5	4101-011-303	43 19.5	4101-011-303	43 19.5	4101-011-303	43 19.5
		4	4101-011-304	43 19.5	4101-011-304	43 19.5	4101-011-304	43 19.5	4101-011-304	43 19.5	4101-011-304	43 19.5
		6	4101-011-306	43 19.5	4101-011-306	43 19.5	4101-011-306	43 19.5	4101-011-306	43 19.5	4101-011-306	43 19.5
		8	4101-011-308	43 19.5	4101-011-308	43 19.5	4101-011-308	43 19.5	4102-012-308	40 18.2	4102-012-308	40 18.2
	10	4101-011-310	43 19.5	4101-011-310	43 19.5	4102-012-310	40 18.2	4102-012-310	40 18.2	4102-012-310	38 17.3	
	12	4101-011-312	43 19.5	4101-011-312	43 19.5	4102-012-312	40 18.2	4102-012-312	40 18.2	4102-012-312	38 17.3	
	14	4101-011-314	43 19.5	4102-012-314	40 18.2	4102-012-314	40 18.2	4102-012-314	34 15.4	4102-012-314	25 11.4	
	16	4101-011-316	43 19.5	4102-012-316	40 18.2	4102-012-316	40 18.2	4102-012-316	34 15.4	4102-012-316	25 11.4	
	20	4101-011-320	43 19.5	4102-012-320	40 18.2	4102-012-320	36 16.3	4103-013-320	37 16.8	4103-013-320	33 15.0	
	24	4102-012-324	40 18.2	4102-012-324	40 18.2	4103-013-324	37 16.8	4103-013-324	31 14.1	4103-013-324	18 8.2	
	30	4102-012-330	40 18.2	4102-012-330	32 14.5	4103-013-330	35 15.9	4103-013-330	19 8.6	4103-013-330	3 1.4	
	No. 10 Cable	3	4101-011-303	43 19.5	4101-011-303	43 19.5	4101-011-303	43 19.5	4101-011-303	43 19.5	4101-011-303	43 19.5
		4	4101-011-304	43 19.5	4101-011-304	43 19.5	4101-011-304	43 19.5	4101-011-304	43 19.5	4101-011-304	43 19.5
		6	4101-011-306	43 19.5	4101-011-306	43 19.5	4101-011-306	43 19.5	4102-012-306	40 18.2	4102-012-306	40 18.2
		8	4101-011-308	43 19.5	4101-011-308	43 19.5	4102-012-308	40 18.2	4102-012-308	40 18.2	4102-012-308	37 16.8
		10	4101-011-310	43 19.5	4102-012-310	40 18.2	4102-012-310	40 18.2	4102-012-310	33 15.0	4102-012-310	24 10.9
12		4101-011-312	43 19.5	4102-012-312	40 18.2	4102-012-312	40 18.2	4102-012-312	33 15.0	4102-012-312	24 10.9	
14		4101-011-314	43 19.5	4102-012-314	40 18.2	4102-012-314	30 13.6	4103-013-314	37 16.8	4103-013-314	25 11.4	
16		4101-011-316	43 19.5	4102-012-316	40 18.2	4102-012-316	30 13.6	4103-013-316	37 16.8	4103-013-316	25 11.4	
20		4102-012-320	40 18.2	4102-012-320	33 15.0	4103-013-320	37 16.8	4103-013-320	21 9.5	4103-013-320	6 2.7	
24		4102-012-324	40 18.2	4102-012-324	26 11.8	4103-013-324	27 12.3	4103-013-324	9 4.1	4103-013-324	6 2.7	

- Rugged construction with oversized bearings
- NEMA-4 limit switch included
- Weather tight
- Dust-tight
- 600 volt ratings
- High amperage slip rings
- Precision-cut spur gears
- Four roller guide

Slip Ring rating - 35 AMPERES

Dimensions are shown in decimal inches and millimeters (inches/mm)



Model No..	Dim. A in. mm	Dim. B in. mm	Dim. E in. mm	Dim. F in. mm	Dim. G in. mm	Dim. H in. mm	Dim. J in. mm	Dim. K in. mm	Dim. L in. mm	Dim. Y in. mm	Dim. W in. mm
4101-011-303	22.50 572	4 102	12.94 329	24.12 613	12.00 305	22.75 578	8.75 222	12.00 305	2.88 73	14.38 366	23.75 603
304	22.50 572	4 102	12.94 329	24.12 613	12.00 305	22.75 578	8.75 222	12.00 305	2.88 73	14.38 366	23.75 603
306	22.50 572	4 102	12.94 329	24.12 613	12.00 305	22.75 578	8.75 222	12.00 305	2.88 73	14.38 366	25.75 654
308	22.50 572	4 102	12.94 329	24.12 613	12.00 305	22.75 578	8.75 222	12.00 305	2.88 73	14.38 366	25.75 654
310	22.50 572	4 102	12.94 329	24.12 613	12.00 305	22.75 578	8.75 222	12.00 305	2.88 73	14.38 366	27.75 705
312	22.50 572	4 102	12.94 329	24.12 613	12.00 305	22.75 578	8.75 222	12.00 305	2.88 73	14.38 366	27.75 705
314	22.50 572	4 102	12.94 329	24.12 613	12.00 305	22.75 578	8.75 222	12.00 305	2.88 73	14.38 366	29.75 756
316	22.50 572	4 102	12.94 329	24.12 613	12.00 305	22.75 578	8.75 222	12.00 305	2.88 73	14.38 366	29.75 756
320	22.50 572	4 102	12.94 329	24.12 613	12.00 305	22.75 578	8.75 222	12.00 305	2.88 73	14.38 366	31.75 807
324	22.50 572	4 102	12.94 329	24.12 613	12.00 305	22.75 578	8.75 222	12.00 305	2.88 73	14.38 366	33.75 857
330	22.50 572	4 102	12.94 329	24.12 613	12.00 305	22.75 578	8.75 222	12.00 305	2.88 73	14.38 366	37.75 959
336	22.50 572	4 102	12.94 329	24.12 613	12.00 305	22.75 578	8.75 222	12.00 305	2.88 73	14.38 366	39.75 1010

4102-012-303	23.00 584	5 127	15.06 383	28.88 734	14.63 372	27.00 686	11.25 286	14.50 368	3.38 86	14.88 378	24.75 629
304	23.00 584	5 127	15.06 383	28.88 734	14.63 372	27.00 686	11.25 286	14.50 368	3.38 86	14.88 378	24.75 629
306	23.00 584	5 127	15.06 383	28.88 734	14.63 372	27.00 686	11.25 286	14.50 368	3.38 86	14.88 378	26.75 680
308	23.00 584	5 127	15.06 383	28.88 734	14.63 372	27.00 686	11.25 286	14.50 368	3.38 86	14.88 378	26.75 680
310	23.00 584	5 127	15.06 383	28.88 734	14.63 372	27.00 686	11.25 286	14.50 368	3.38 86	14.88 378	28.75 730
312	23.00 584	5 127	15.06 383	28.88 734	14.63 372	27.00 686	11.25 286	14.50 368	3.38 86	14.88 378	28.75 730
314	23.00 584	5 127	15.06 383	28.88 734	14.63 372	27.00 686	11.25 286	14.50 368	3.38 86	14.88 378	30.75 781
316	23.00 584	5 127	15.06 383	28.88 734	14.63 372	27.00 686	11.25 286	14.50 368	3.38 86	14.88 378	30.75 781
320	23.00 584	5 127	15.06 383	28.88 734	14.63 372	27.00 686	11.25 286	14.50 368	3.38 86	14.88 378	32.75 832
324	23.00 584	5 127	15.06 383	28.88 734	14.63 372	27.00 686	11.25 286	14.50 368	3.38 86	14.88 378	34.75 883
330	23.00 584	5 127	15.06 383	28.88 734	14.63 372	27.00 686	11.25 286	14.50 368	3.38 86	14.88 378	38.75 984
336	23.00 584	5 127	15.06 383	28.88 734	14.63 372	27.00 686	11.25 286	14.50 368	3.38 86	14.88 378	40.75 103

4103-013-303	22.75 578	7 178	19.06 484	36.88 937	18.63 473	35.00 889	15.25 387	18.50 470	4.38 111	15.88 404	26.75 680
304	22.75 578	7 178	19.06 484	36.88 937	18.63 473	35.00 889	15.25 387	18.50 470	4.38 111	15.88 404	26.75 680
306	22.75 578	7 178	19.06 484	36.88 937	18.63 473	35.00 889	15.25 387	18.50 470	4.38 111	15.88 404	28.75 731
308	22.75 578	7 178	19.06 484	36.88 937	18.63 473	35.00 889	15.25 387	18.50 470	4.38 111	15.88 404	28.75 731
310	22.75 578	7 178	19.06 484	36.88 937	18.63 473	35.00 889	15.25 387	18.50 470	4.38 111	15.88 404	30.75 781
312	22.75 578	7 178	19.06 484	36.88 937	18.63 473	35.00 889	15.25 387	18.50 470	4.38 111	15.88 404	30.75 781
314	22.75 578	7 178	19.06 484	36.88 937	18.63 473	35.00 889	15.25 387	18.50 470	4.38 111	15.88 404	32.75 832
316	22.75 578	7 178	19.06 484	36.88 937	18.63 473	35.00 889	15.25 387	18.50 470	4.38 111	15.88 404	32.75 832
320	22.75 578	7 178	19.06 484	36.88 937	18.63 473	35.00 889	15.25 387	18.50 470	4.38 111	15.88 404	34.75 883
324	22.75 578	7 178	19.06 484	36.88 937	18.63 473	35.00 889	15.25 387	18.50 470	4.38 111	15.88 404	36.75 934
330	22.75 578	7 178	19.06 484	36.88 937	18.63 473	35.00 889	15.25 387	18.50 470	4.38 111	15.88 404	40.75 1035
336	22.75 578	7 178	19.06 484	36.88 937	18.63 473	35.00 889	15.25 387	18.50 470	4.38 111	15.88 404	42.75 1086

All Series 4100 Reels are weathertight, dust-tight (NEMA-4 enclosures), and are equipped with 2NC-2NO rotary limit switch (NEMA-4 enclosure), four roller guide, and guide rails. Reels are driven by a 1/3 hp, 230/460 volt, 3 phase, 60 cycle, TENV reversible gearhead motor with an electrically released magnetic brake. The reel lifts and lowers the cable at an average speed of 60 fpm. Consult the factory for delivery and other requirements.

## Static Discharge Grounding Reels

Eliminates static build-up. Spring-operated, automatic retrieve reels.

The 2050-Y Reel with a "Y" bridle allows two ground connections at the same time, providing maximum efficiency.



### 2050 STATIC DISCHARGE REELS

- Spring operated, automatic retrieve reel
- Stranded steel aircraft cable is 3/32".
- Provides light, constant spring tension on the cable
- 100 ampere ground clamp
- Rubber cable stop

Catalog no.	Cable length		Net weight		Resistance ohms
	ft.	m	lbs.	Kg	
2050	50	15.24	12	5.44	2.0
2050-Y*	50	15.24	12	5.44	2.0
2050NC	50	15.24	12	5.44	2.0
2050CT	50	15.24	12	5.44	2.0
2050NCCT	50	15.24	12	5.44	2.0

"NC" = nylon coated cable 3/32"

"CT" = constant tension models.

\*2050 Reel with "Y" Bridle (30 ft. payout then 20 ft. bridle for each branch, with clamps) allows simultaneous grounding at two points.

## Ground Fault Cable Retractor

Models GR900 and GR1000 are sturdy compact spring-powered cable reels that provide a convenient and efficient method of retracting and storing equipment ground cables on electric utility service trucks requiring a minimum of maintenance.

### GR GROUND FAULT REELS

- Retracts temporary ground cable for portable equipment
- Ground cable protection when not in use.
- Compact design provides more efficient use of vehicle storage space.
- Easy field cable termination
- No bonding required as ground cable connected directly to collector ring.



### Capacity

Cable AWG Model	Length (ft., meters)		
#2	40	12.2	GR900
1/0	40	12.2	GR900
2/0	40	12.2	GR900
2/0	60	18.3	GR1000L
4/0	50	15.2	GR1000L

### Qualification Tests

Certified testing 2/0 AWG sample with cable fully extended:

Scenario/Result	Duration	Amplitude	Resistance	
			Before	After
one shot/ rotated freely same resistance after rotating	8 cycles	18.4 kA	0.548m	0.610m
reclose sequence/ rotated freely same resistance after rotating	8 cycles (2 sec)	18.7 kA	0.541m	
	8 cycles (15 sec)	18.6 kA		
	9 cycles	18.2 kA		0.639m
breaker failure/ rotating freely 0.646m resistance after rotating to failure/ 2.0 cable lead fused open 6 in. from reel. No damage to collector ring.	100 cyc.	15.6 kA	0.594m	0.638m
	101 cyc.	15.5 kA	n/a	